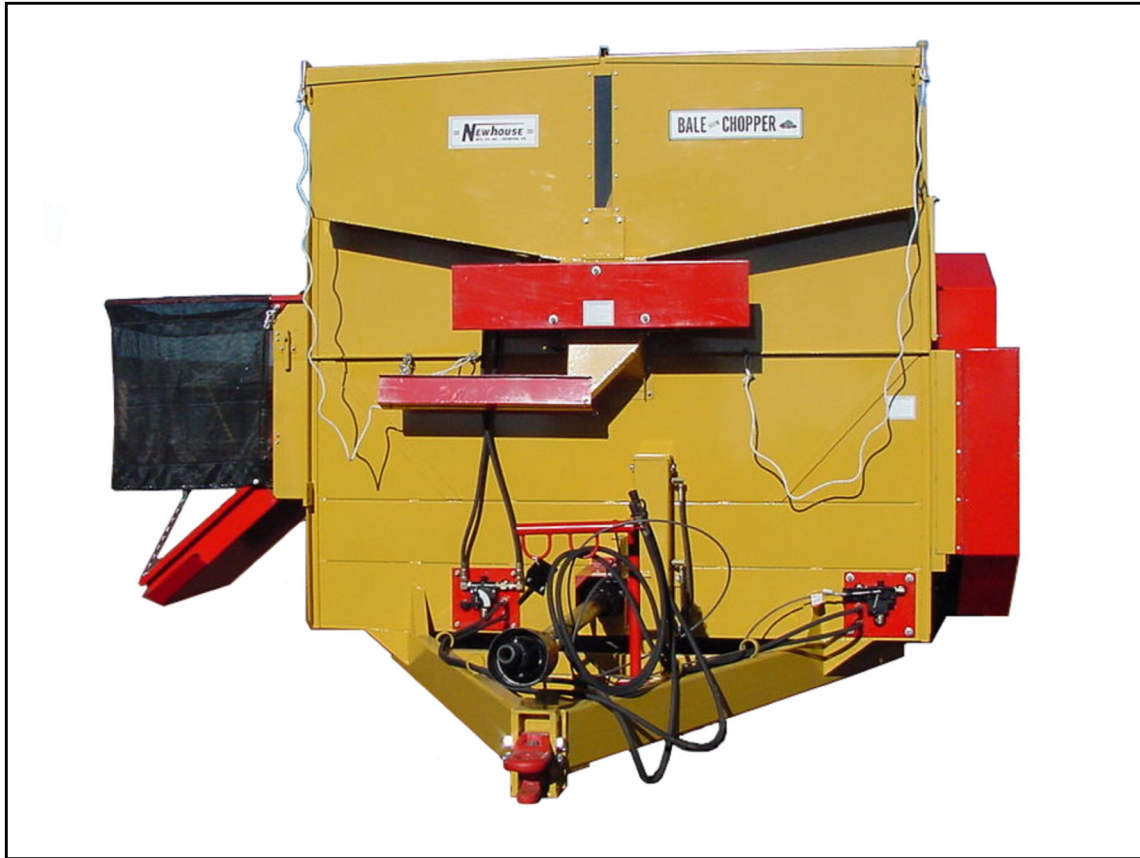


GRAIN DISPENSER FOR C5000 CHOPPER WITH CRIMPER CRACKER



HOPPER HOLDS APPROXIMATELY 40 CUBIC FEET OF MATERIAL



Hydraulically adjusted grain roller feed with a switching control knob which changes from the jack to the grain roller and back. Requiring only one set of hoses from the tractor to handle both functions.

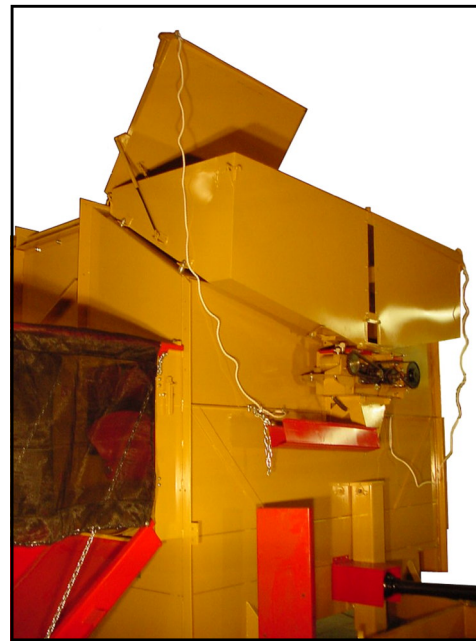
= Newhouse =
Mfg. Co. Inc. - Redmond, OR

1048 N. 6th STREET REDMOND, OR 97756

PHONE: (541)-548-1055 (800)-587-1055 FAX: (541)-548-4144

WEB SITE: www.newhouse-mfg.com

E-mail: info@newhouse-mfg.com

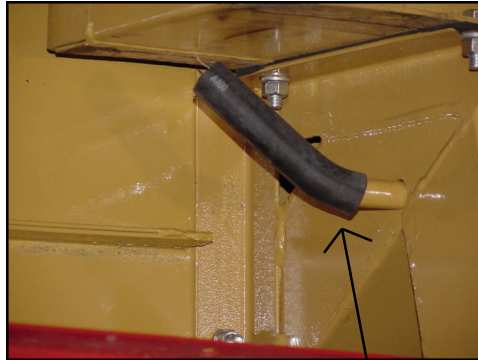
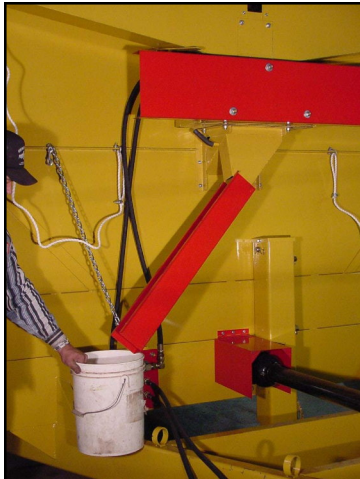


Rope pull to lock and unlock the lids for filling the hopper. Operated from ground level to avoid climbing up to open and close lids.

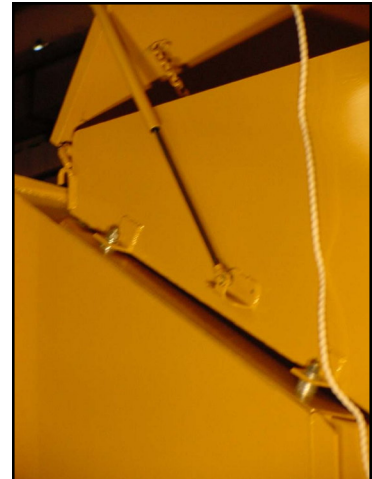
= FOR CORN, BARLEY, WHEAT, MILO MAIZE, ETC. =



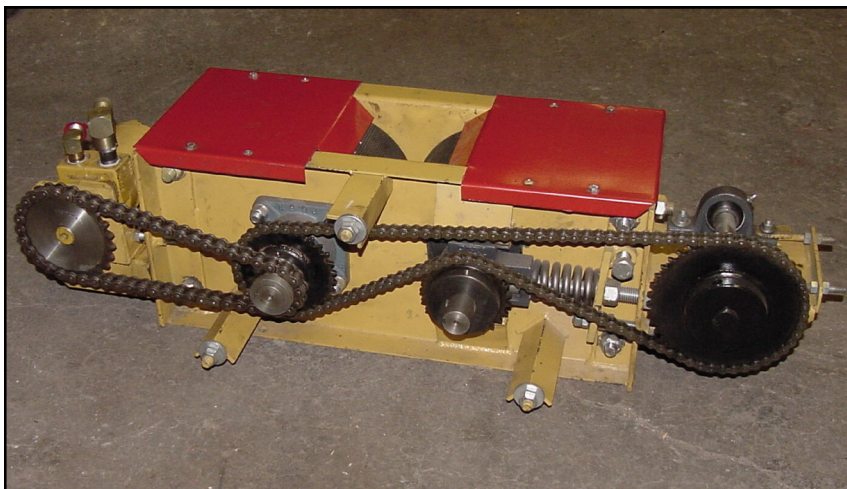
Rope is used from ground level to release latch and close gas spring assisted hopper lid.



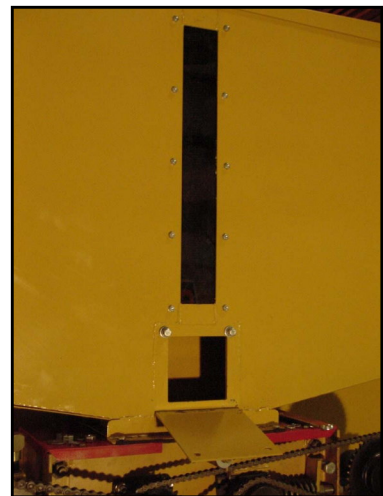
Crimp / Cracked grains can be diverted from chopper discharge chute to the outside chute for measuring or other use with the flipping of the lever above.



Gas springs will lift lid automatically when latches are released.



Hydraulic motor driven roller chain drive train for a positive roller drive. Spring loaded rollers with adjustable gap for different grains. Rollers are case hardened



Grain level viewing window with a cleanout door. Adjustments to roller gap for different grains can be made from the clean out door.